



## The KB3000-AHL Adult Changing Station



**Koala Kare™**

A Division of Bobrick

# KB3000-AHL — Adult Changing Station

## Designed to Be More Inclusive

Too often, it is a struggle for families and caregivers of adolescents and adults with special needs or disabilities to find an adequate means of changing in public. Whether it is traveling through an airport or train station, attending a sporting event, or simply visiting a museum, families with special needs requirements have very limited options (if any at all). In many instances, they may have to skip going out in public altogether.

For 35 years, Koala Kare products has been the leader in commercial baby changing stations. Now, we are excited to offer our first Special Needs Changing Station, the KB3000-AHL, expanding our product offerings to address the needs of all families. In addition to contemporary design and durability, the KB3000's table is height adjustable, which reduces the risk of injury for caregivers during changing. This unit will be a lifeline connecting those with special needs and disabilities to the public locations that they want and need to be able to visit.

- **Approximately 30% of the U.S. population has a disability**

- **65% of families with disabled children feel isolated frequently or all the time**

- **83% of disabled people avoided inaccessible or unwelcoming businesses**

## Prioritizing Safety

- Working load of up to 500 lbs.
- Emergency stop.
- Comes with back-up battery in case of power outage.
- Tested to ISO Standard 60601-1 and -2

## Easy to Use

- Table height adjusts from 12" to 41" from the floor.
- Height is easily adjusted using electronic control buttons on the wall panel or the front guard of unit.
- Curved dip in front of guard for easier caregiver access.

## Unmatched Durability

- Designed specifically for public areas.
- Vandal-resistant changing surface rated to IK10.
- Suitable for wet environments with rust-free frame.

## Hygienic

- Crevice-free design.
- Smooth surface that is easy to wipe down and disinfect.



# Specifications

Changing Surface Size:  
75 5/16" (1913mm) L x 31 1/2" (800mm) W

Height Range:  
12" (300mm) - 41" (1040mm)

Safe Working Load: 500 lbs (227kg)

Depth (Closed): 9 23/32" (247 mm)

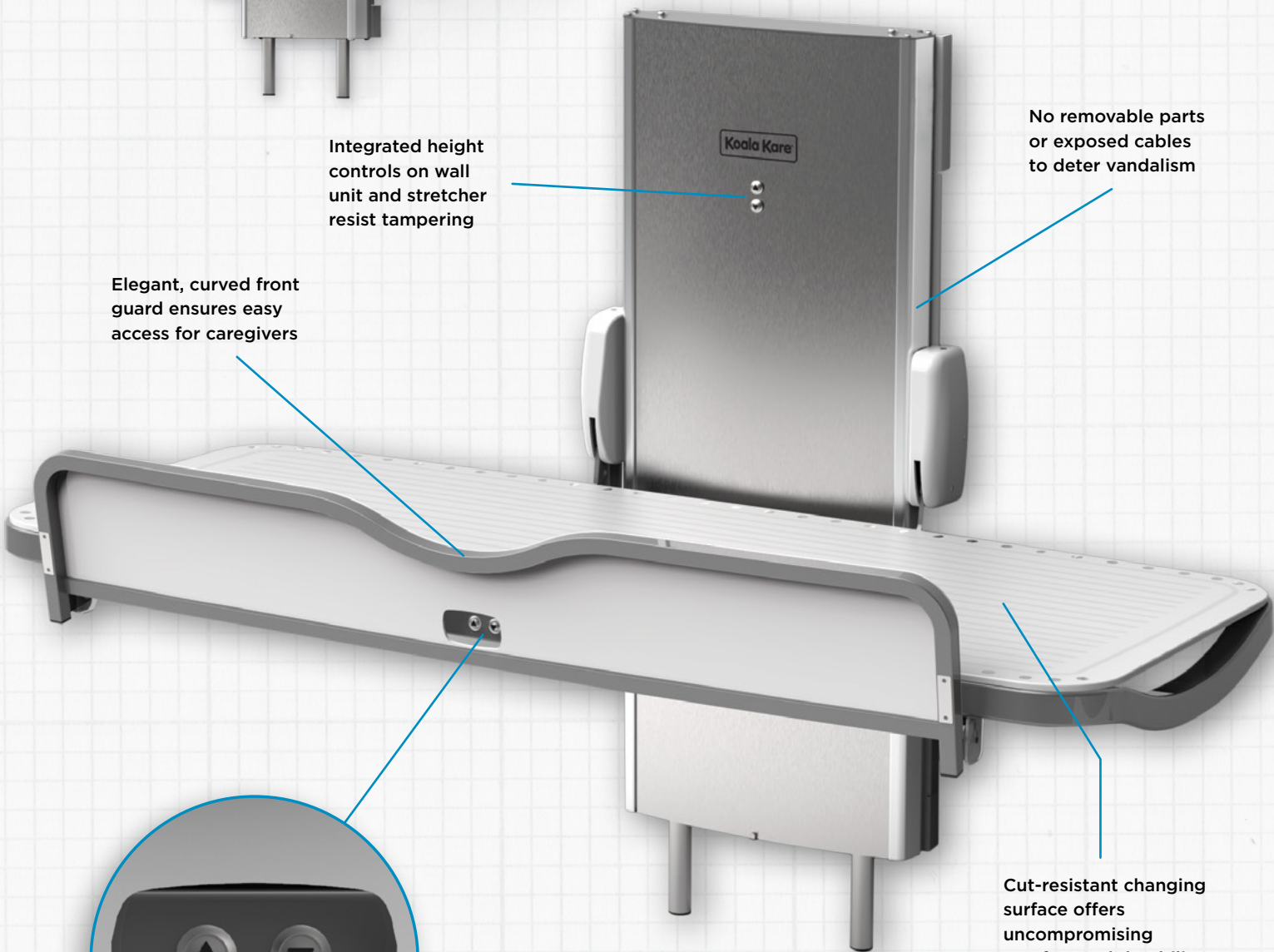
Changing station  
in closed position



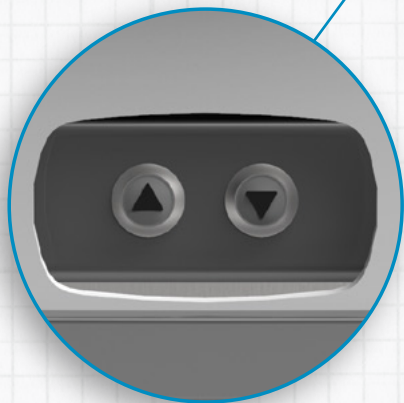
Integrated height  
controls on wall  
unit and stretcher  
resist tampering

Elegant, curved front  
guard ensures easy  
access for caregivers

No removable parts  
or exposed cables  
to deter vandalism



Cut-resistant changing  
surface offers  
uncompromising  
comfort and durability



Integrated height  
controls on wall  
unit and stretcher  
resist tampering

**Koala Kare**

A Division of Bobrick

## Compliance

Koala Kare Products is committed to safety and compliance with relevant industry standards.

The KB3000-AHL unit has the following testing/ratings:

- ISO 60601
- IK10: Resistant to high impact and sharp objects
- IPX4: Can withstand significant exposure to water without damage to its electrical components

---

## Warranty Information

Three-year warranty applies to normal use environments. Terms and conditions apply.

---

## Installation

For installation instructions, videos and other resources, please visit the KB3000 product page at [www.koalabear.com/product-catalog/kb3000-ahl/](http://www.koalabear.com/product-catalog/kb3000-ahl/)



A Division of Bobrick

Koala Kare Products  
6982 S. Quentin Street  
Centennial, CO 80112

[Koalabear.com](http://Koalabear.com)

